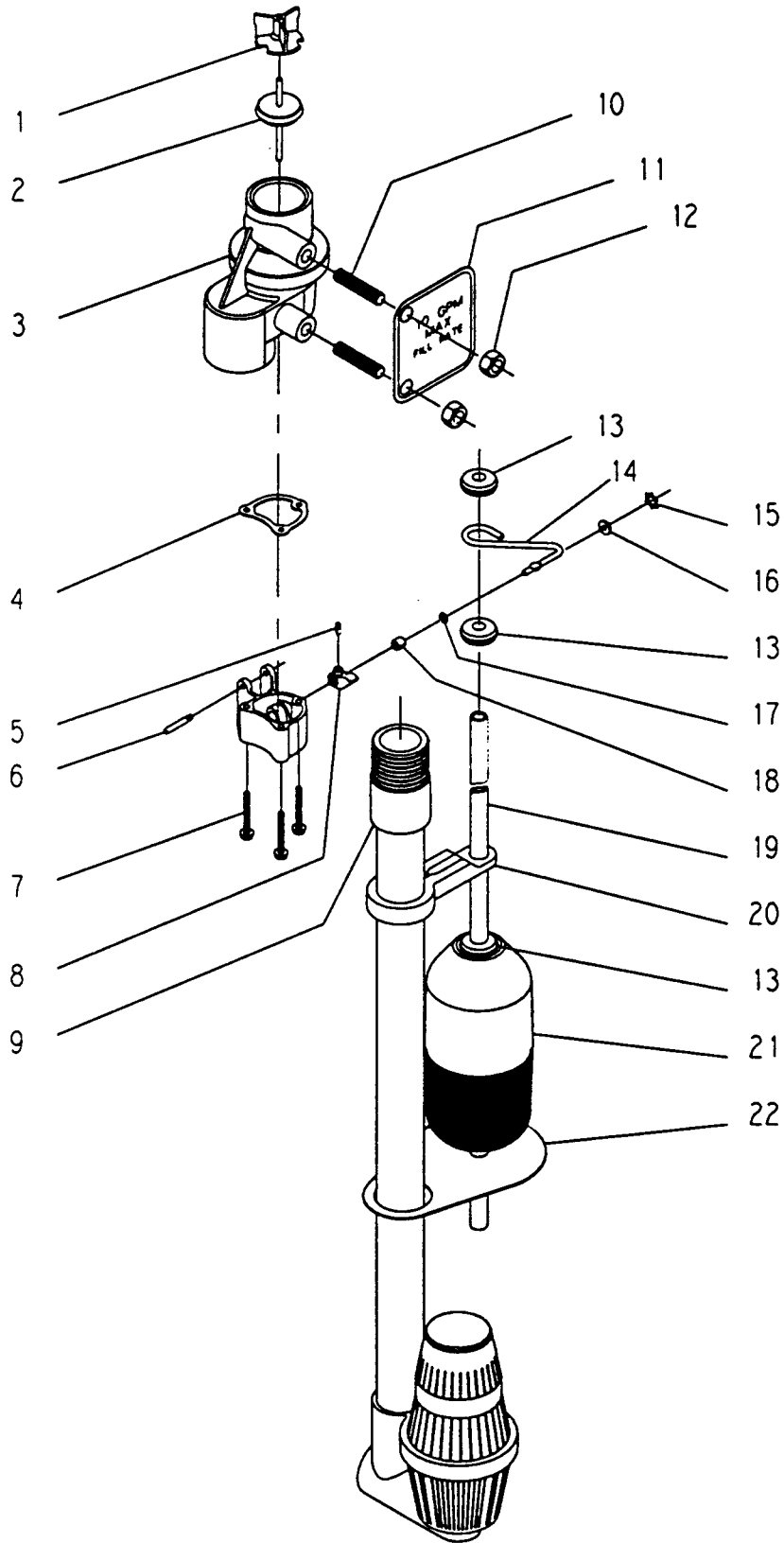


# MODEL 2350

*commercial safety brine valve*



# MODEL 2350

## *commercial safety brine valve*

---

Item No.	Quantity	Part No.	Description
1	1	19109	Deflector
2	1	19293	Brine Valve Seat Assembly, 2350
3	1	16446	Brine Valve Body Assembly
4	1	16884	Gasket, 2350
5	1	16219	Screw, Hex Socket Head
6	1	16892	Pin
7	3	16920	Screw, Hex Socket Head
8	1	16876	Actuator, 2350
9	1	16453	Fitting, Pipe PVC
10	2	18813	Stud, Mounting 5/16-18
11	1	17015	GPM Tag
12	2	16451	Nut, Hex Nylon 5/16-18
13	4	10150	Grommet
14	1	16878	Rod, Actuator
15	1	16891	Retaining Ring
16	1	16875	Bushing, Retainer 2350
17	1	16889	Quad Ring, -006
18	1	16877	Bushing, 2350
19	1	10149	Float Rod, 30"
20	1	17117	Float Rod Guide
21	1	11154	Float Assembly, Red/White
22	1	16905	Float Damper

### Assembly Part Numbers

60038- #2350 Commercial Safety Brine Valve (body only)

60026- Float Assembly (red/white)

60009- #900 Air Check (commercial)